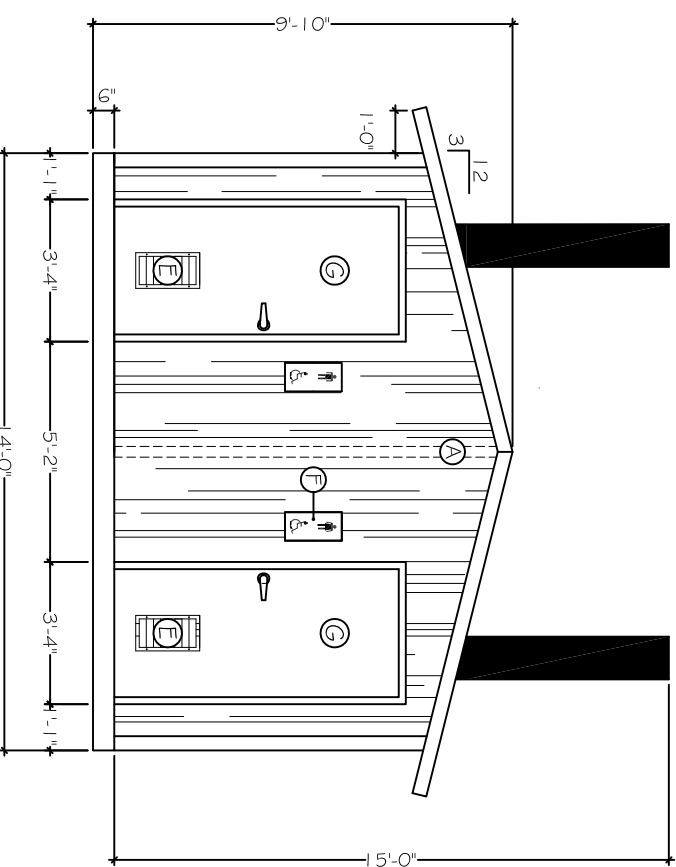
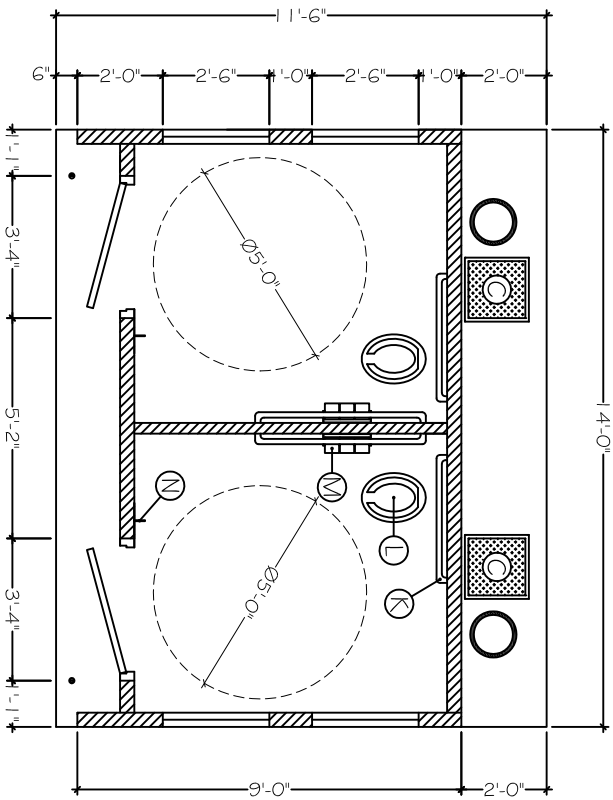


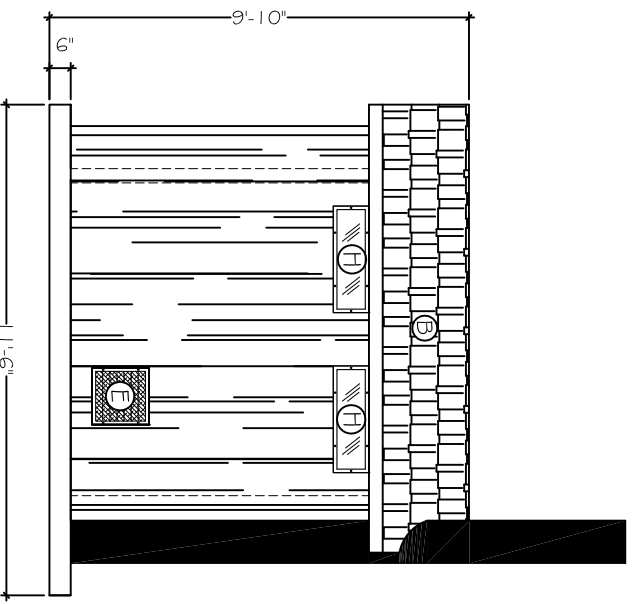
LEFT ELEVATION



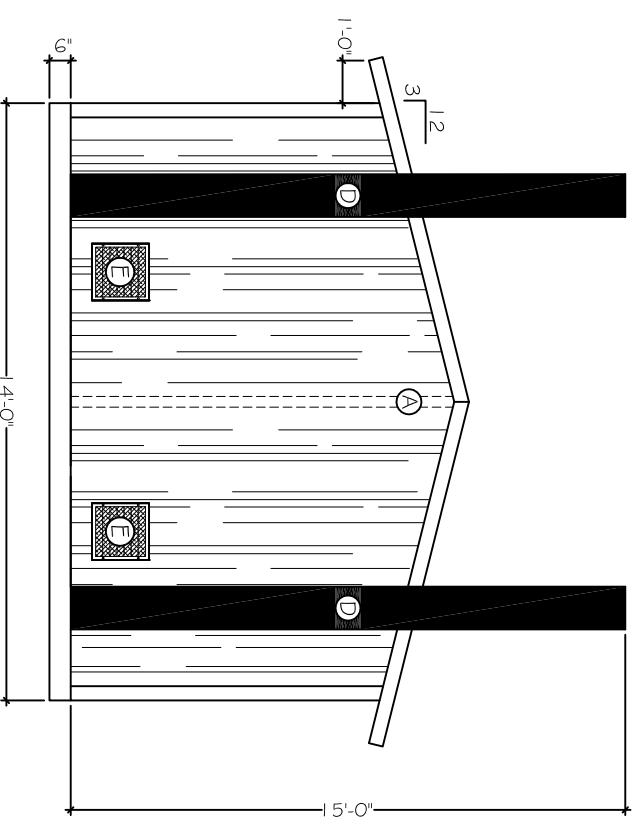
FRONT ELEVATION



FLOOR PLAN



RIGHT ELEVATION



REAR ELEVATION

- Ⓐ EXTERIOR FINISH - SIMULATED BARNWOOD EXTERIOR FINISH; CONCRETE PIGMENT & STAIN
- Ⓑ ROOF - SIMULATED CEDAR SHAKE ROOF; CONCRETE PIGMENT & STAIN
- Ⓒ CLEANOUT DOORS - (TYP 2 PLCS) 1 8" X 1 8" LIGHT DUTY HATCH, LOCKABLE
- Ⓓ VENT PIPES - (TYP 2 PLCS) 1 2" DIAMETER PLASTIC PIPE; SMOOTH WALLED INTERIOR AND EXTERIOR
- Ⓔ VENTS - (TYP 2 PLCS) 1 6" X 1 6" LOUVER WITH RODENT SCREEN; WALL VENT LOCATION SHALL BE DETERMINED BY THE ORIENTATION OF THE BUILDING.
- Ⓕ EXTERIOR SIGNS - (TYP 2 PLCS) ADA ACCESSIBLE AND RESTROOM SIGN
- Ⓖ DOOR - (TYP 2 PLCS) 3'-0" X 6'-8" 1 6 GAUGE, GRADE 11 HEAVY DUTY GALVANIZED DOOR WITH POLYURETHANE FOAM CORE, VANDAL PROOF TENSION HINGES, DORMITORY STYLE LOCK ADA ACCESSIBLE
- Ⓗ WINDOWS - (TYP 4 PLCS) POLYCARBONATE WINDOW WITH METAL FRAMES
- Ⓘ INTERIOR - WALLS & CEILING TO BE COATED WITH TWO PART EPOXY - COLOR WHITE
- Ⓛ FLOOR - COATED WITH TWO PART EPOXY - GRAY
- Ⓜ GRAB BARS - (TYP 2 PLCS) 36" (SST), 42" (SST) GRAB BARS
- Ⓨ TOILET RISER - (TYP 2 PLCS) POLYETHYLENE RISER
- Ⓩ TOILET PAPER DISPENSER - (TYP 2 PLCS) (SST) SLOW ROLLING ADA TRIPLE TOILET PAPER DISPENSER, LOCKABLE
- ⓐ COAT HOOKS - (TYP 2 PLCS) DOUBLE PRONG COAT HOOK
- ⓑ VAULTS - (TYP 2 PLCS) 1000 GALLON VAULT LINED WITH LINER

KANAWHA W/O CHASE
PRECAST CONCRETE VAULT TOILET
 11'-6" x 14'-0" x 9'-10"



CARR CONCRETE CORPORATION
 P.O. BOX 265
 WAVERLY, WV 26184-0265
 PHONE: (800)837-8918
 FAX: (304)464-4013

JOB #	
CHECKED BY:	
DATE:	1/21/07
DRAWN BY:	BAG
SCALE:	AS INDICATED
SHEET NO.:	1 of 1
SUBMITTAL:	APPROVAL DRAWING
REV. DATE	DESCRIPTION