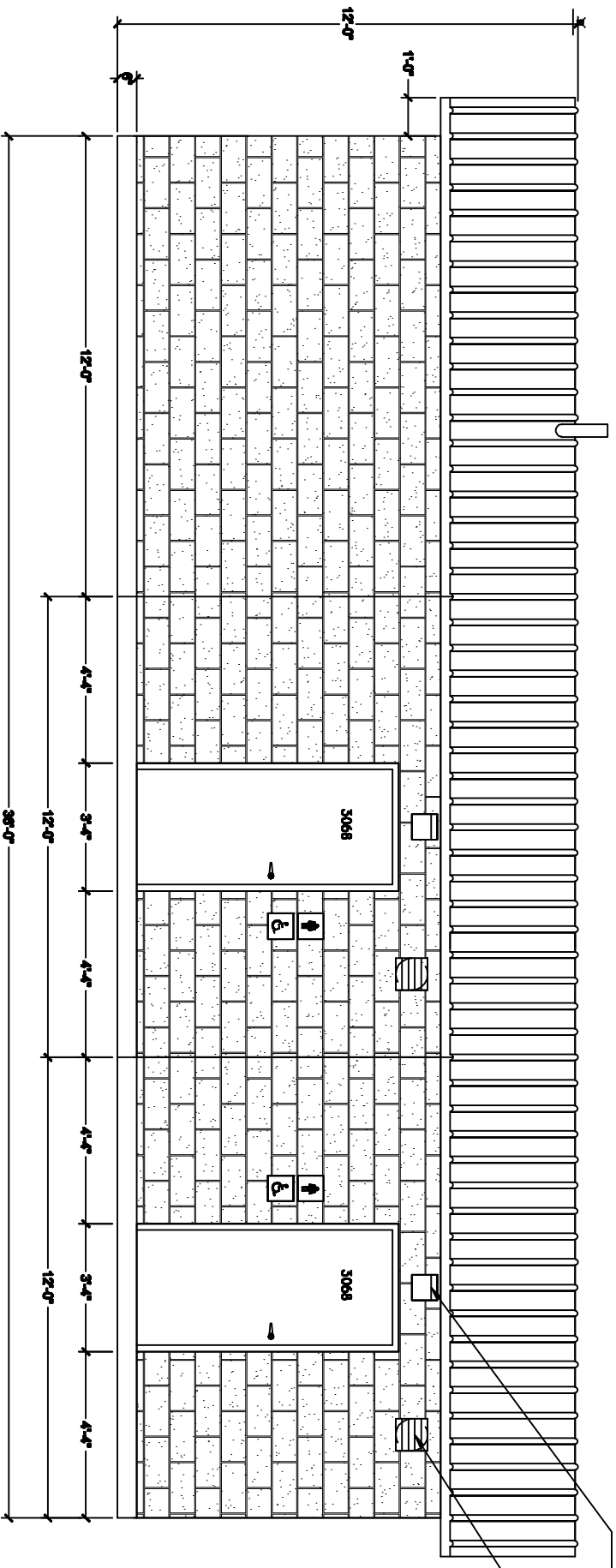


LEFT ELEVATION

3'-0" x 6'-8" GRADE II HEAVY-DUTY METAL DOOR WITH POLYURETHANE FOAM CORE STAINED TO CUSTOMER'S CHOICE BASED UPON COMMERCIALLY AVAILABLE STAINS (TYP. 6 PLCS)



RIGHT ELEVATION

EXTERIOR PHOTOCELL LIGHT 35 WATT HIGH PRESSURE SODIUM (TYP. 4 PLCS)

10" x 10" EXHAUST FAN WITH GRAVITY LOUVER (TYP. 3 PLCS)

POCONO

PRECAST CONCRETE BUILDING
26'-0" X 36'-0" X 12'-0" H



CARR CONCRETE CORPORATION
P.O. BOX 265
WAVERLY, WV 26184-0265
PHONE: (800)837-8918
FAX: (304)484-4013

REV	DATE	DESCRIPTION
0		AS SHOWN

SUBMITTALS: APPROVAL DRAWING
 CHECKED BY: [Signature]
 DATE: 01/27/09
 DRAWN BY: [Signature]
 SCALE: AS INDICATED
 SHEET NO: 3 of 4