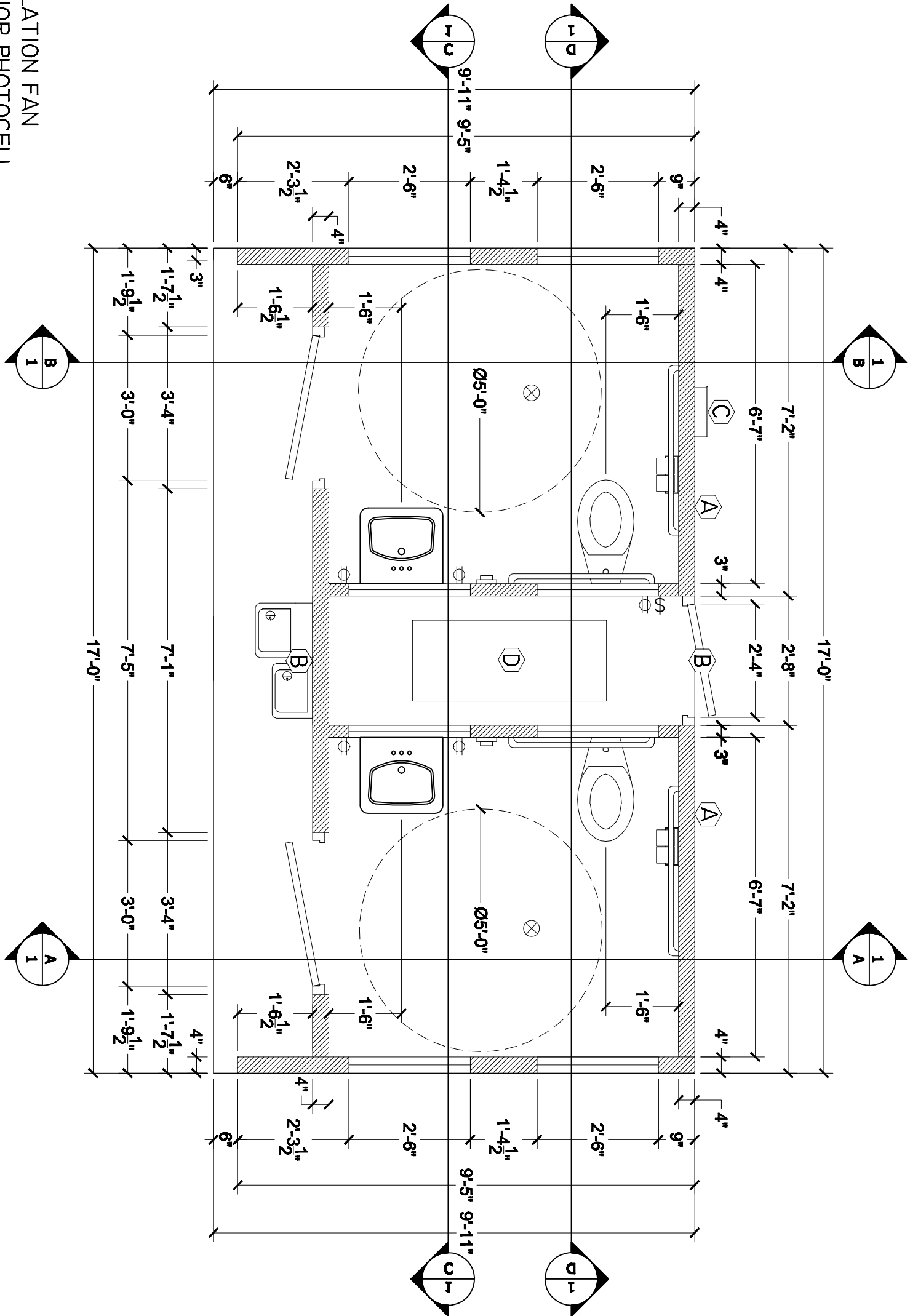


- A (2)-VENTILATION FAN
- B (2)-EXTERIOR PHOTOCELL
- C 150AMP NEMA SERVICE PANEL
- D FLUORESCENT 4' (3) BULB



**WILLOUGHBY**  
 PRECAST CONCRETE BUILDING  
 9'-11" X 17'-0" X 9'-10" H



**CARR CONCRETE CORPORATION**  
 P.O. BOX 265  
 WAVERLY, WV 26184-0265  
 PHONE: (800)837-8918  
 FAX: (304)484-4013

REV	DATE	DESCRIPTION

SUBMITTED FOR APPROVAL  
 DRAWING  
 CHECKED BY: *BM*  
 DATE: 04/14/09  
 DRAWN BY: *BM*  
 SCALE:  
 SHEET NO. 1 OF 1